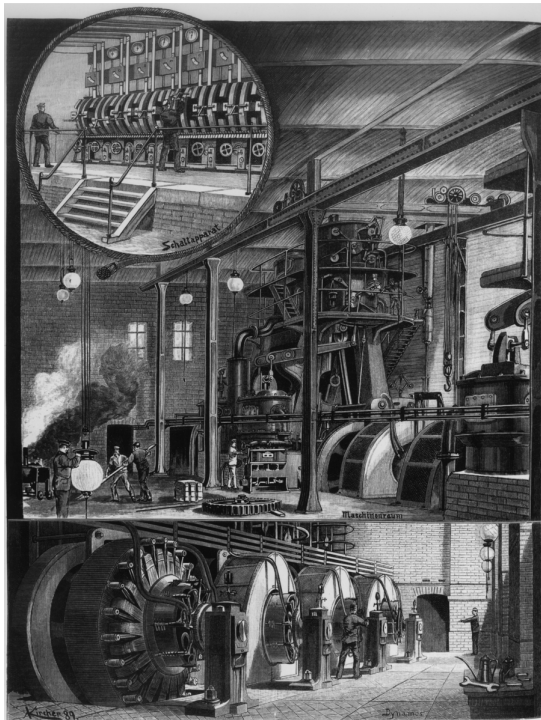


Berlin's Central Power Station (1890)

Abstract

This woodcut, based on a drawing by A. Kircher, takes us inside Berlin's central power station on Markgrafenstrasse. The shunting station can be seen at the top left. The machine room appears in the middle, and the bottom panel shows the dynamos that generated the electrical power demanded by the rapidly modernizing city.

Source



Source: Berlin's central electrical power station on Markgrafenstraße. Woodcut (1890). bpk-Bildagentur, image number 20005708. For rights inquiries, please contact Art Resource at requests@artres.com (North America) or bpk-Bildagentur at kontakt@bpk-bildagentur.de (for all other countries).

© bpk

Recommended Citation: Berlin's Central Power Station (1890), published in: German History in Documents and Images, <<https://germanhistorydocs.org/en/forging-an-empire-bismarckian-germany-1866-1890/ghdi:image-1260>> [April 27, 2024].