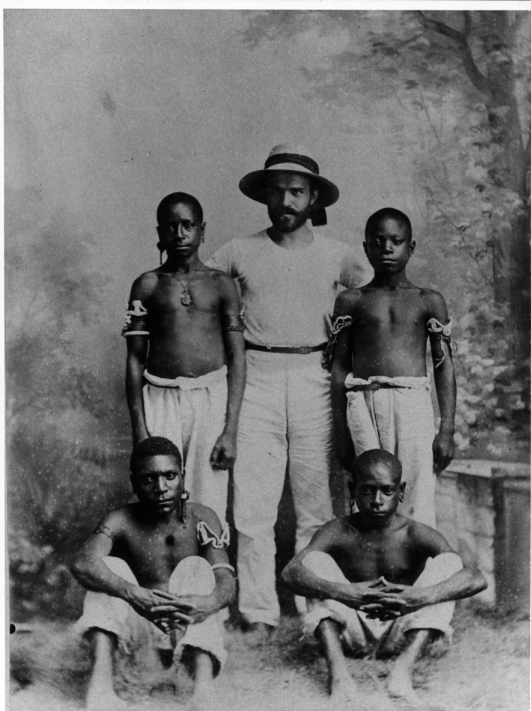


Station Chief and Guinean Workers, German New Guinea (1887)

Abstract

Here we see the station chief of the New Guinea Company, Julius/Guyllas Winter, posing in an almost fatherly manner with four Guinean workers, in the colonial station Finschhafen. The men were most likely employed as plantation workers. The Finschhafen station was on the east coast of Kaiser-Wilhelm-Land, the mainland portion of German New Guinea in the Pacific. After the German flag was first raised over Kaiser-Wilhelm-Land under the auspices of the German New Guinea Company, the station was founded in 1885 by the ethnographer and explorer Otto Finsch (1839–1917), closed due to a malaria epidemic in 1891, and reopened in 1901. At this location could also be found a branch office of the Neuendettelsau Mission Society (Neuendettelsauer Missionsgesellschaft), a post office, and a registry office [Standesamt].

Source



Source: The station chief of the New Guinea Company, Julius/Guyllas Winter, with Guinean workers at the colonial station Finschhafen (Kaiser-Wilhelms-Land, New Guinea). Photograph (1887).

bpk-Bildagentur, Image-No. 30013631. For rights inquiries, please contact Art Resource at requests@artres.com (North America) or bpk-Bildagentur at kontakt@bpk-bildagentur.de (for all other countries).

Recommended Citation: Station Chief and Guinean Workers, German New Guinea (1887), published in: German History in Documents and Images, <<https://germanhistorydocs.org/en/forging-an-empire-bismarckian-germany-1866-1890/ghdi:image-5101>> [May 15, 2024].