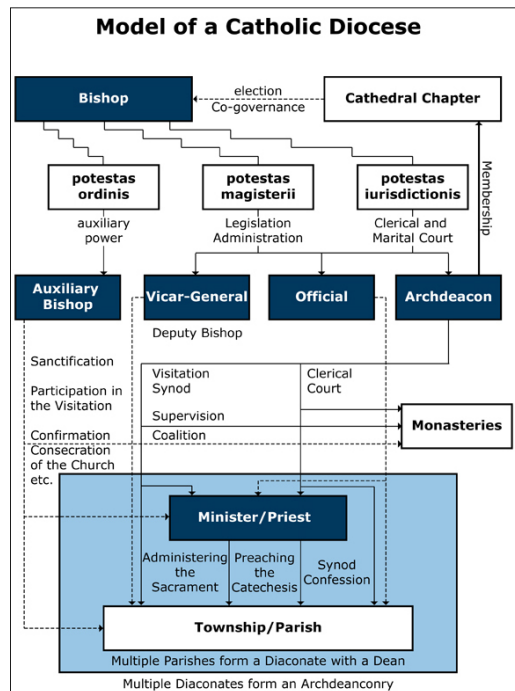


Model of a Catholic Diocese

Abstract

This diagram shows the organization of a Catholic diocese from bishop to parish.

Source



Source: Heinrich Richard Schmidt, *Konfessionalisierung im 16. Jahrhundert*. Oldenbourg Wissenschaftsverlag, Munich, 1992, p. 29

Recommended Citation: Model of a Catholic Diocese, published in: German History in Documents and Images,

<<https://germanhistorydocs.org/en/from-the-reformations-to-the-thirty-years-war-1500-1648/ghdi:image-4451>> [April 03, 2025].