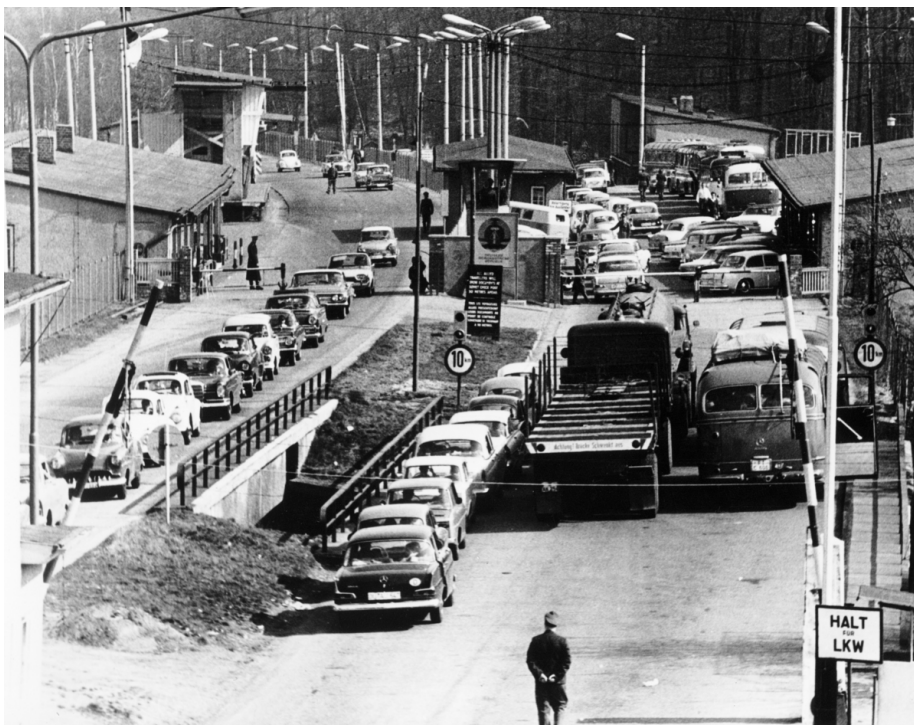


Border Crossing (1965)

Abstract

The checkpoint Helmstedt-Marienborn in Lower Saxony was the largest and most important crossing point along the inner-German border. Because of its proximity to West Berlin, it handled the lion's share of the through-traffic between West Germany and Berlin, and cars were often backed up. In the early 1970s, the GDR replaced the crossing depicted in this 1965 photograph with a larger and more effectively guarded border installation. Photographer unknown.

Source



Source: Traffic jam at the border crossing Helmstedt (Lower Saxony). Date: March 4, 1965.
bpk-Bildagentur, image number 30008355. For rights inquiries, please contact Art Resource at requests@artres.com (North America) or bpk-Bildagentur at kontakt@bpk-bildagentur.de (for all other countries).

© bpk

Recommended Citation: Border Crossing (1965), published in: German History in Documents and Images, <<https://germanhistorydocs.org/en/two-germanies-1961-1989/ghdi:image-109>> [July 27, 2024].