

## Miners in the Ore Mountains (c. 1910)

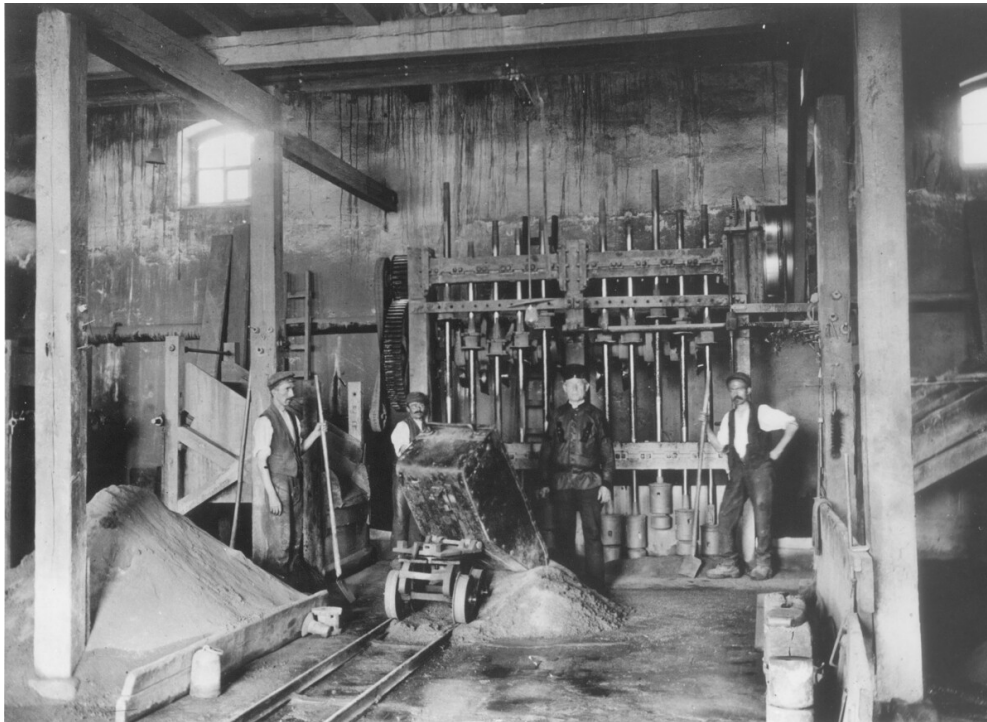
### Abstract

---

This photograph shows workers in a mine near Freiberg (Saxony). Located in the Ore Mountains [Erzgebirge], Freiberg was one of Germany's mining centers. Although steel and mechanized technology had made the extraction of raw materials easier, mining still required strenuous – and often dangerous – work.

### Source

---



Source: Photo: Otto Haeckel.

bpk-Bildagentur, image number 20004648. For rights inquiries, please contact Art Resource at [requests@artres.com](mailto:requests@artres.com) (North America) or bpk-Bildagentur at [kontakt@bpk-bildagentur.de](mailto:kontakt@bpk-bildagentur.de) (for all other countries).

bpk-Bildagentur

Recommended Citation: Miners in the Ore Mountains (c. 1910), published in: German History in Documents and Images,  
<<https://germanhistorydocs.org/en/wilhelmine-germany-and-the-first-world-war-1890-1918/ghdi:image-1633>> [September 26, 2025].